

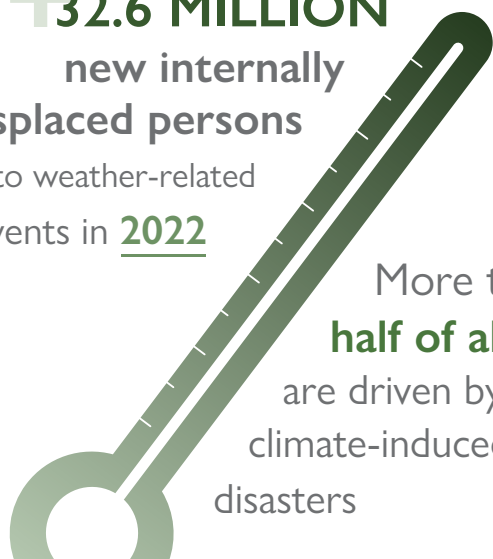


HUMAN MOBILITY AND CLIMATE CHANGE - A SNAPSHOT

THE CLIMATE CRISIS IS RESHAPING HUMAN MOBILITY, and the implications are far-reaching

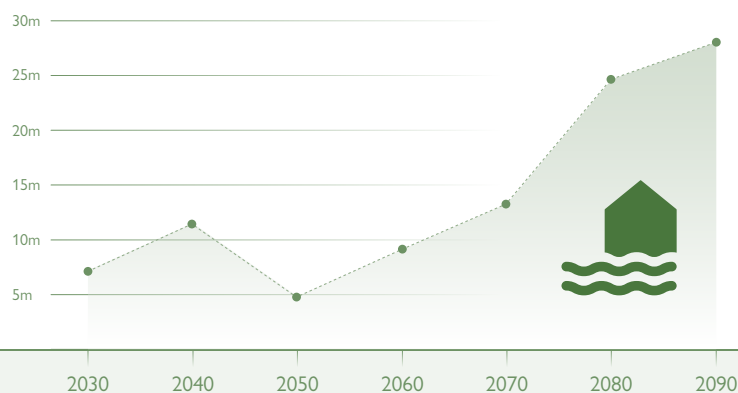
+32.6 MILLION
new internally displaced persons

due to weather-related events in **2022**

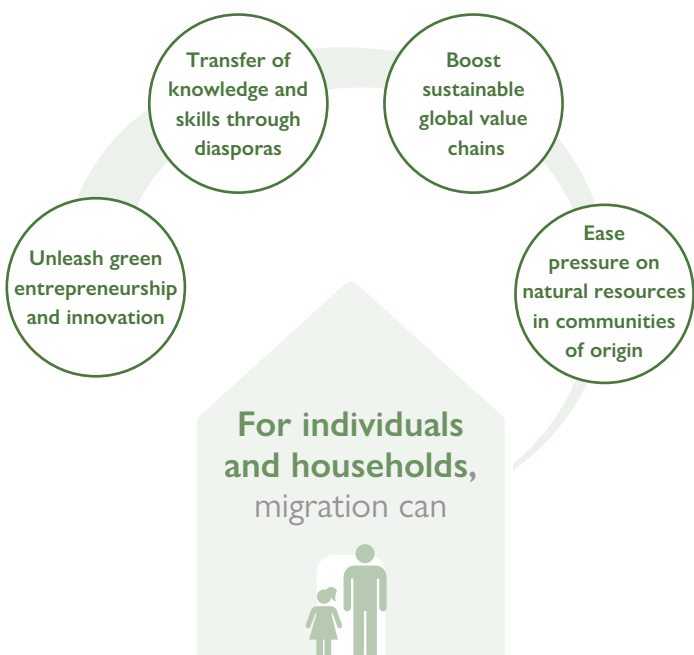


More than **half of all IDPs** are driven by climate-induced disasters

According to projections developed by IOM people exposed to **river floods** will increase more than triple by 2090



Proactively addressing climate and environmental factors helps **make migration a choice, not a necessity**



Tuvalu and Australia 1st climate migration agreement

The **'Falepili Union'**, illustrates opportunities for building out **migration pathways** that can work for the **benefit of all**

